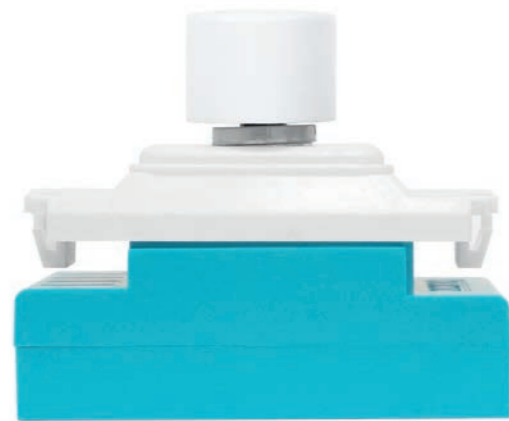


# ZGRIDLED150 & ZGRIDLED+

## Next generation LED dimming



The advanced **ZGRIDLED** family is the most compatible range available; it's easy to install and provides the best user experience. Easy-fit installation features include increased terminal size, a larger control knob and a smaller, streamlined module.

A range of 9 grid adapters will now be available in each pack, including the Euro and the new Schneider Lisse White adapters. Both **ZGRIDLED** versions come with a white plastic knob as standard, and also fit a standard size control knob for custom finishing.

Brand new "Learn and Adapt" technology allows all of our **ZGRIDLED** dimmers to learn the circuit's load and adapt accordingly, supporting an even greater number of lamps per circuit than before. The **ZGRIDLED** family now has the widest dimming range on the market.

As with all of our Zano LED dimmers, built-in digital technology also ensures silent dimming without affecting your WiFi, unlike triac dimmers. They also enable flicker-free and silent dimming on quality LED lamps and incorporate Zano's problem solving smart settings.



### SPECIFICATIONS

PART NO.	ZGRIDLED150	ZGRIDLED+
MODULE SIZE	SINGLE GRID	SINGLE GRID
LAMP TYPE	LED/CFL	LED/CFL
MAX WATT	150W / VA	250W / VA
MIN WATT	0W / VA	5W / VA
MIN BOX DEPTH	35 MM	35 MM
2-WAY SWITCHING	YES	YES
NEED TO DE-RATE TO 160 / VA	N/A	YES IF FITTING 2 OR MORE PER PLATE

### MAXIMUM PLATE LOAD RECOMMENDATIONS

COVER PLATE SIZE	CFL	LED
SINGLE PLATE	500W	500W
DOUBLE PLATE	640W	640W
6-8 GANG	1280W	1280W

### ZGRIDLED RANGE VITAL STATISTICS

- 0-150W or 5-250W / VA LED
- Flicker-free & silent
- Zano smart settings
- Learns and adapts
- Not limited to 10 lamps
- Easy fit installation
- 9 grid adapters
- Available in black or white
- Knob available in plastic, polished chrome and stainless steel
- Also fits Euro Plates



ZGRIDLED+ in black with polished chrome plate and knob